

**PLEASE CHECK WWW.MOLEX.COM FOR LATEST PART INFORMATION**

**Part Number:** [0910230003](#)  
**Status:** **Active**  
**Overview:** [junction box io connectors](#)  
**Description:** 6.00mm (.236") Pitch Junction Box, ISO, Vertical, 32 Circuits, Contact Layout 3

**Documents:**

[3D Model](#) [Product Specification PS-99020-0076 \(PDF\)](#)  
[Drawing \(PDF\)](#) [RoHS Certificate of Compliance \(PDF\)](#)

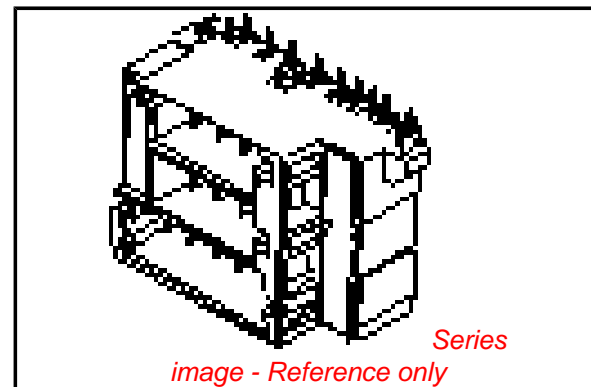
**General**

Product Family	PCB Headers
Series	<a href="#">91023</a>
Application	Wire-to-Board
Comments	Contact Layout 3 - see Sales Drawing
Overview	<a href="#">junction box io connectors</a>
Product Name	Junction Box

**Physical**

Breakaway	No
Circuits (Loaded)	32
Circuits (maximum)	32
Circuits Detail	Spade 32
Color - Resin	Black, Natural, Natural (White)
Durability (mating cycles max)	30
First Mate / Last Break	No
Glow-Wire Compliant	No
Guide to Mating Part	No
Keying to Mating Part	None
Lock to Mating Part	Yes
Material - Metal	Phosphor Bronze
Material - Plating Mating	Tin
Material - Plating Termination	Tin
Material - Resin	Nylon, Polyester
Number of Rows	7
Orientation	Vertical
PC Tail Length (in)	0.125 In
PC Tail Length (mm)	3.20 mm
PCB Locator	Yes
PCB Retention	Yes
PCB Thickness Recommended (in)	0.062 In
PCB Thickness Recommended (mm)	1.60 mm
Packaging Type	Tray
Pitch - Mating Interface (in)	0.236 In
Pitch - Mating Interface (mm)	6.00 mm
Plating min: Mating (µin)	120, 80.00
Plating min: Mating (µm)	2.000, 3
Plating min: Termination (µin)	120, 80.00
Plating min: Termination (µm)	2.00, 3
Polarized to PCB	Yes
Shrouded	Fully
Stackable	No
Surface Mount Compatible (SMC)	Yes
Temperature Range - Operating	-40°C to +85°C
Termination Interface: Style	IDT or Pierce, Through Hole

**Electrical**



**EU RoHS**

**China RoHS**

**Compliance Status**

**Not Reviewed**

**REACH SVHC**

Not Reviewed

**Halogen-Free**

**Status**

**Not Reviewed**

**Need more information on product environmental compliance?**

Email [productcompliance@molex.com](mailto:productcompliance@molex.com)  
 For a multiple part number RoHS Certificate of Compliance, [click here](#)

Please visit the [Contact Us](#) section for any non-product compliance questions.

**Search Parts in this Series**

[91023Series](#)

Current - Maximum per Contact  
Voltage - Maximum

10A  
12V

**Solder Process Data**

Lead-free Process Capability

Reflow Capable (SMT only)

**Material Info**

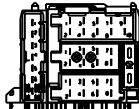
**Reference - Drawing Numbers**

Product Specification  
Sales Drawing

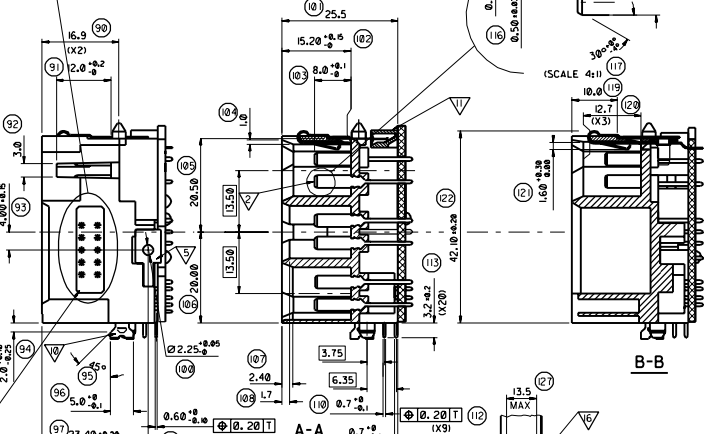
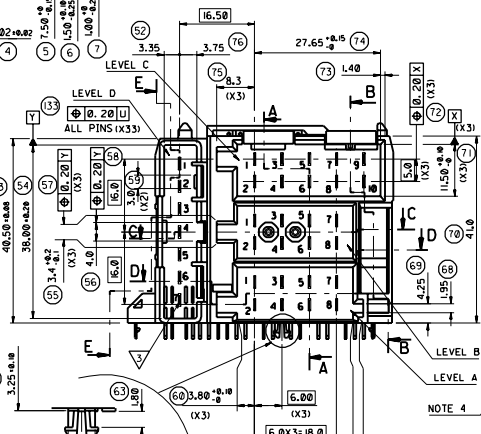
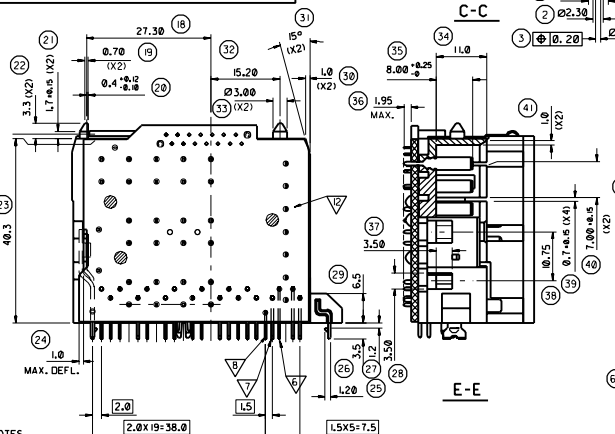
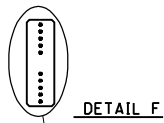
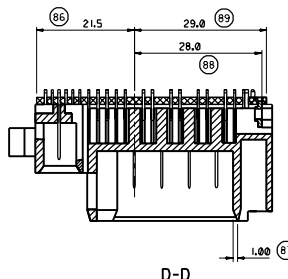
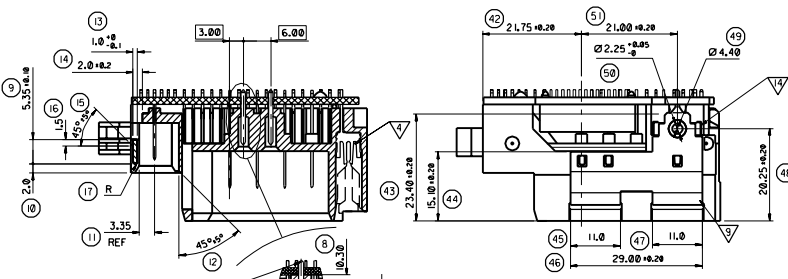
PS-99020-0076  
SDA-91023

This document was generated on 05/26/2010

**PLEASE CHECK [WWW.MOLEX.COM](http://WWW.MOLEX.COM) FOR LATEST PART INFORMATION**

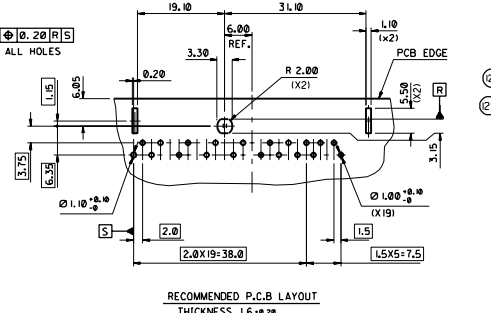
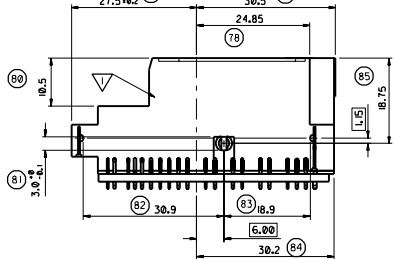


APPLICABLE TO 91023-0005, -0006 ONLY  
(SCALE 1:1)

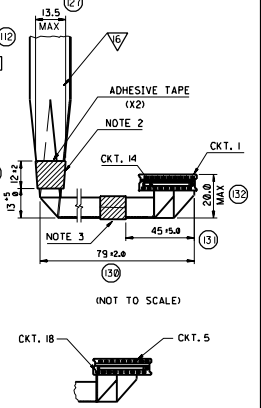


- NOTES
1. TRAY PACKAGED; 200PCS IN TRAY AS PER PACKAGING SPECIFICATION ES99039-00/05
  2. NUMBER OF TURNS IN TAPE TO BE L5
  3. NUMBER OF TURNS IN TAPE TO BE 2.5
  4. STAMP TO SHOW DATE OF MANUFACTURE AND LAST 5 DIGITS OF CUSTOMER PART No. SEE DETAIL F FOR SECONDARY SUPPLIER'S LABEL
- (33) LAST INSPECTION NUMBER USED

REF. NO.	COMPONENT	QUANTITY	MADE FROM	REMARKS
1	HOUSING	1	ULTRAMID B3WGG(30Z)	COLOUR: BLACK
2	LEVEL A,B&C CONTACT	SEE TABLE	Bd 0.5 DIN 1791 CuZn37 F54 DIN 17670	3-5 um SnPb IN SOLDER TAIL AREA ONLY
3	LEVEL D CONTACT	SEE TABLE	Bd 0.5 DIN 1791 CuZn37 F55 DIN 17670	1.27 um MIN. NI UNDERCOAT OVERALL
4	FUSE CONTACT	2	CuSn8 0.7 FB410 DIN 1780 APPLICABLE TO 91023-0005 ONLY	
5	DIRECT GROUNDING	1	Bd 0.8 DIN 1791 CuZn30 F35 DIN 17670	3-5 um SnPb OVER
6	UPPER BD-BD CONTACT	9	Bd 0.5 DIN 1791 CuZn37 F54 DIN 17670	1.27 um MIN. NI UNDERCOAT OVERALL
7	LOWER BD-BD CONTACT	9		
8	SUB BD-BD CONTACT	1		
9	UPPER GROUNDING SPRING	1	CuSn8 0.3 HV190 U DIN 1780	APPLICABLE TO 91023-0003, 0005
10	CLINCH	2	Bd 0.5 DIN 1544 ST2LGBK DIN624 T52 E 11/2/11/2 DIN1616	3-5um SnPb OVERALL
11	CABLE HOLDER	1	PA 66 UL94V-0 (14 CKT.)	COLOUR: NATURAL
12	PCB	1	SEE TABLE	SEE TABLE
13	GATEWAY PIN	2	CuZn30 F43 DIN17672	1.27 um MIN. NI UNDERCOAT OVERALL SOLDER AREA: 3-5 um SnPb
14	BRACKET	1	Bd 0.8 DIN 1544 ST2LGBK DIN624 T52 E 11/2/11/2 DIN1616	APPLICABLE TO 91023-0003, 0005
15	FUSE	1	DIN 17 581 T10 APPLICABLE TO 91023-0005 ONLY	
16	JUMPER HARNESS	1	HCKT. RIBBON CABLE HARNESS	1.27mm PITCH AWG28 TIN TOP COATED WIRE



PART NO.	CUSTOMER PART No.	LEVEL A	LEVEL B	LEVEL C	LEVEL D	PCB	FUSE
91023-0001	3111-117-12242	3, 4, 5, 6, 7, 8	3, 4, 5, 6	NONE	1, 2, 3, 6, 7	3111-113-37212	NO
91023-0002	3111-117-12342	3, 4, 5, 6, 7, 8	ALL	NONE	1, 2, 3, 6, 7	3111-113-37322	NO
91023-0003	3111-117-12222	3, 4, 5, 6, 7, 8	ALL	1, 2, 3, 4, 5, 7, 8, 9, 10	1, 2, 3, 6, 7	3111-113-37282	NO
91023-0005	3111-117-12442	ALL	ALL	ALL	NONE	3111-113-37371	YES
91023-0006	3111-117-12572	ALL	ALL	ALL	1, 2, 3, 4, 5, 7, 8, 9, 10	3111-113-37432	YES



(33) CABLE CIRCUITRY APPLICABLE TO 91023-0006 ONLY

REVISE ONLY ON CAD SYSTEM

MOLEX EUROPE

DATE: 95/07/04

SEE CHART